



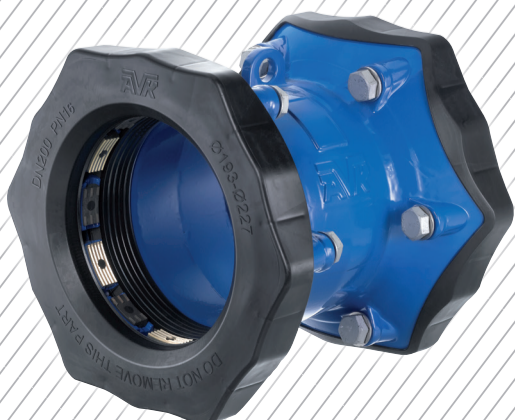
# AVK SUPA MAXI™ UNIVERSAL COUPLINGS

## PIPE OUTSIDE DIAMETERS BASED ON PIPE TYPE

DN	SUPA MAXI		PN 10	AC		DI	Steel	HDPE/PVC
	Min	Max		PN 12.5	PN 15			
50	48	71						63
65	69	91				82	76.1	
80	82	106				98	88.9	90
100	104	133	120	126	132	118	114.3	110/125
125	132	161	149	153	159	144	139.7	140
150	159	188	176	182	190	170	168.3	160/180
200	193	227	234	244	252	222	219.1	200/225
225	224	257						250
250	266	301	288	298	306	274	273	280
300	314	356	344	356	366	326	323.9	315/355
400	392	442	456	472	490	429	406.4	400

## SUPA MAXI SELECTION CHART BASED ON PIPE TYPE & DN

DN	AC			DI	Steel	Ext. mm	HDPE/PVC
	PN 10	PN 12.5	PN 15				
50						63	50
65				65	65		
80				80	80	90	80
100	100	100	100	100	100	110/125	100
125	125	125	125	125	125	140	125
150	150	150		150	150	160/180	150
200	225	225	225	200	200	200/225	200
225						250	225
250	250	250		250	250	280	250
300	300	300		300	300	315/355	300
400				400	400	400	400



- Suitable for DI, Steel, AC, HDPE, PVC and GRP
- Carries tensile loads
- Allows +/- 4° deflection on each side
- Perfect for maintenance: quick and reusable
- Also available as flange adaptor, step coupling, end cap and transition coupling